



PLATIO



# PLATIO SOLAR PAVER

## ■ datasheet

**PLATIO SOLAR** is a Hungarian green tech company focusing on creating sustainable building materials. Our company is the developer and manufacturer of **PLATIO** solar pavement.

**PLATIO** is an innovative, energy-generating **solar paver** that provides clean energy, also is an eco-friendly product, as its base is made out of recycled plastic. By combining these features, our product is a double-green building material. **PLATIO** functions as traditional solar panels, and we offer an aesthetic and space-saving solution for areas where conventional solar technologies cannot be deployed.

Application areas of **PLATIO** are the following:

- **residential** (pavement, terraces, balconies, driveways),
- **public** (sidewalks, parks, bicycle roads, marinas, low traffic roads)
- **industrial** (office and other buildings, warehouses, rooftops)
- **off-grid solutions:** EV charging systems or outdoor utensils (smart bench, outdoor ad screens).

We offer the **PLATIO paver with OPAL glass** and monocrystalline solar cells.

Product features:



### FAST & EASY INSTALLATION

Installation is fast and easy to execute, similar to conventional tiling. No heavy-duty equipment is necessary.



### DURABILITY

High-quality engineering ensures resistance to load, impact, scratches and weather, while providing vandalism resilience.



### SIMPLE TO OPERATE AND MAINTAIN

**PLATIO** is user-friendly and is maintained like any conventional paver.



### SAFETY

**PLATIO** operates on safe low voltage and provides the highest available level of anti-skidding.



### EFFICACY

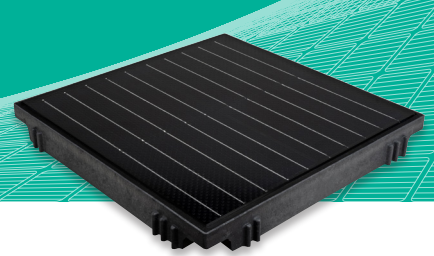
Green energy is harvested by high-performing solar cells that are integrated into the pavement.





# PLATIO SOLAR PAVER

## ■ datasheet



### GENERAL DATA

Sizes mm	353 x 353 x 41 mm
Joint gap (by spacers) mm	6 mm
Size with gaps (for planning) mm	359 x 359 grid
Surface	gross (with joints): 0,129 net: 0,125 m <sup>2</sup> / piece
Material requirements	7,752 pieces / m <sup>2</sup>
Weight	6,5 kg / piece
Upper surface	10 mm tempered glass - extra clear material
Surface treatment method	Opal: blasted surface with a coating
Anti-skid	R11 according to DIN 51 130
Frame material	Recycled polymer composite; LDPE and HDPE copolymer with matrix-forming material
Recycled material	100% plastic
Cable type	14 AWG Red: + Black: -; heat resistant till 105°C; resistant to petroleum derivatives
IP protection	IP68
Connector type	IP68; no wire stripping necessary; scotchlok / coolspice connector

### TEMPERATURE COEFFICIENT

Maximum Power (Pmax)	-0,38 %/°C
Open Circuit Voltage (Uoc)	-0,36 %/°C
Short Circuit Current (Isc)	+0.07 %/°C
Standard test condition	AM 1,5 - 1000 W/m <sup>2</sup> - 25°C

### LIMIT VALUES

Maximum system voltage	120 VDC
Maximum system current	20 A
Maximum allowed vehicle wheel load	2000 kg / pcs

### WARRANTY

Product guarantee	5 year
Standards	CE, ISO 9001: 2015 - - SELV / DC

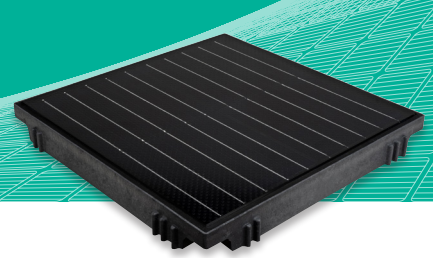
### ENVIRONMENT PROTECTION AND CIRCULAR ECONOMY

Reuse	If it has no visible traces of external damage the product is suitable as a cover for walking surfaces even after the life of the solar cells (decades).
Recycle	If removing the glass surface: form a 3-5 mm fraction with a hammer grinder. Without removing the glass surface: 0/1 (d / D) material formation with a hammer grinder.
Adding recycled material to a new product	In the whole composite: max. 20%
Responsibility	Our company recycles the product free of charge in case of delivery to the manufacturing site for an unlimited time from its production.



# PLATIO SOLAR PAVER

■ datasheet

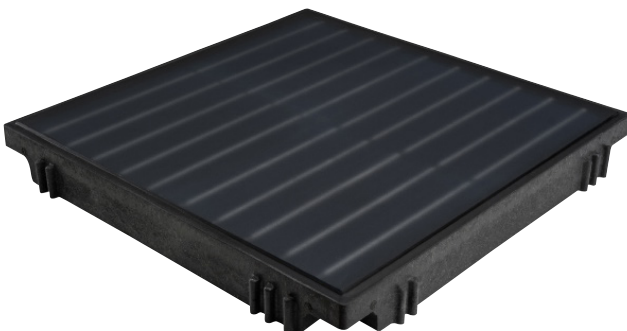


## CLEAN ENERGY FROM THE PAVEMENT

### OPAL PAVER CELL DATA

Cell type	Monocrystalline
Cell size	158.75x158.75 mm
Cells in modules	4 pcs
Nominal power	170.6 Wp/m <sup>2</sup>
Nominal power	21.93 Wp/pcs
Open circuit voltage	2.67 UOC (V)
Short circuit current	10.184 ISC (A)
Cell's efficiency	21.80%
Voltage at point of max. power	2.28 V
Current at point of max. power	9.62 A
Power deviation	±5 %

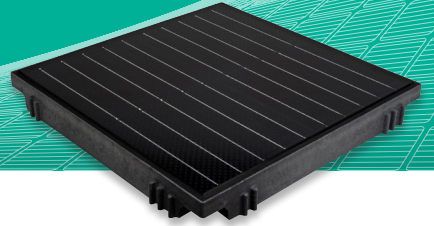
CAUTION: Read safety and installation instructions before using the product.



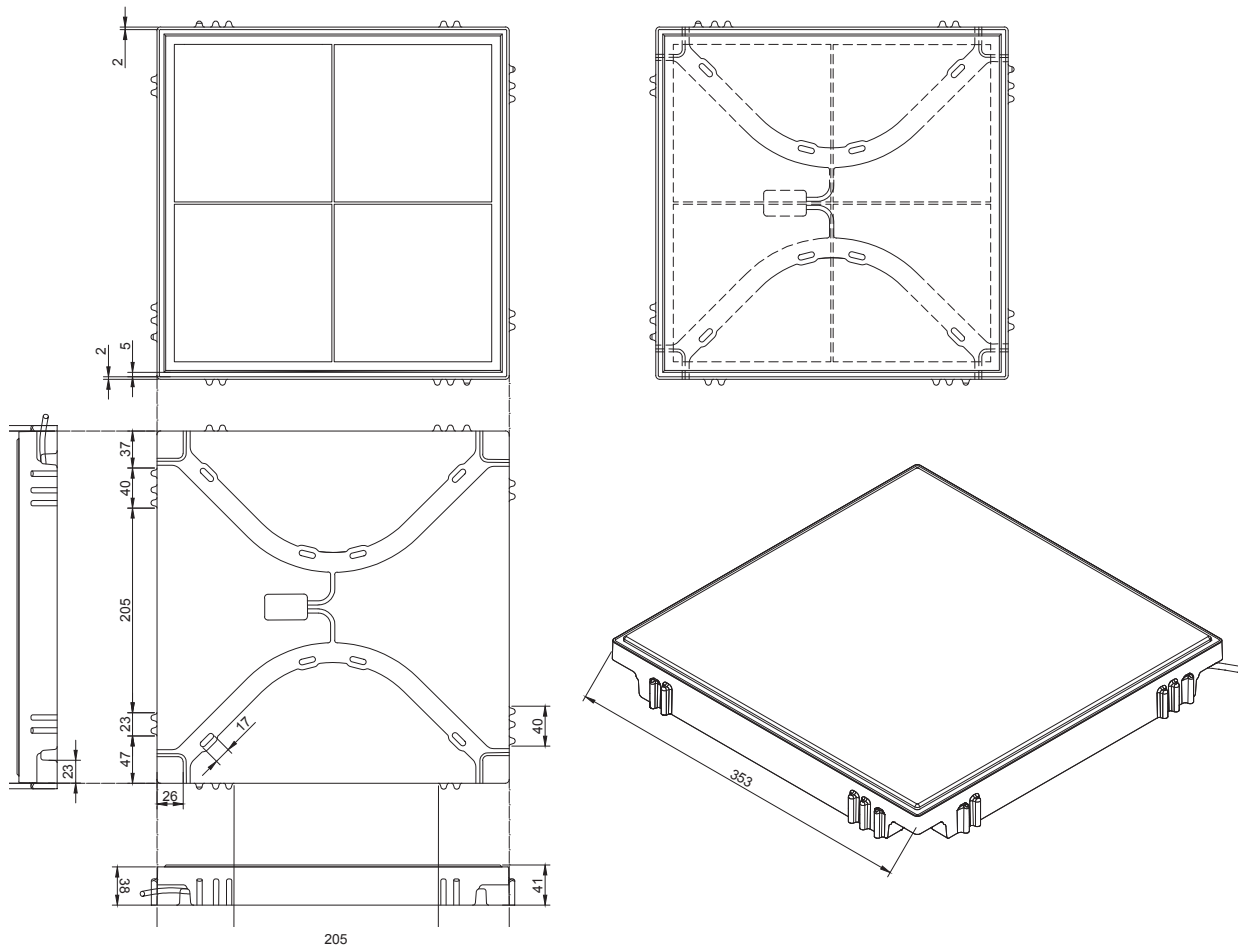


# PLATIO SOLAR PAVER

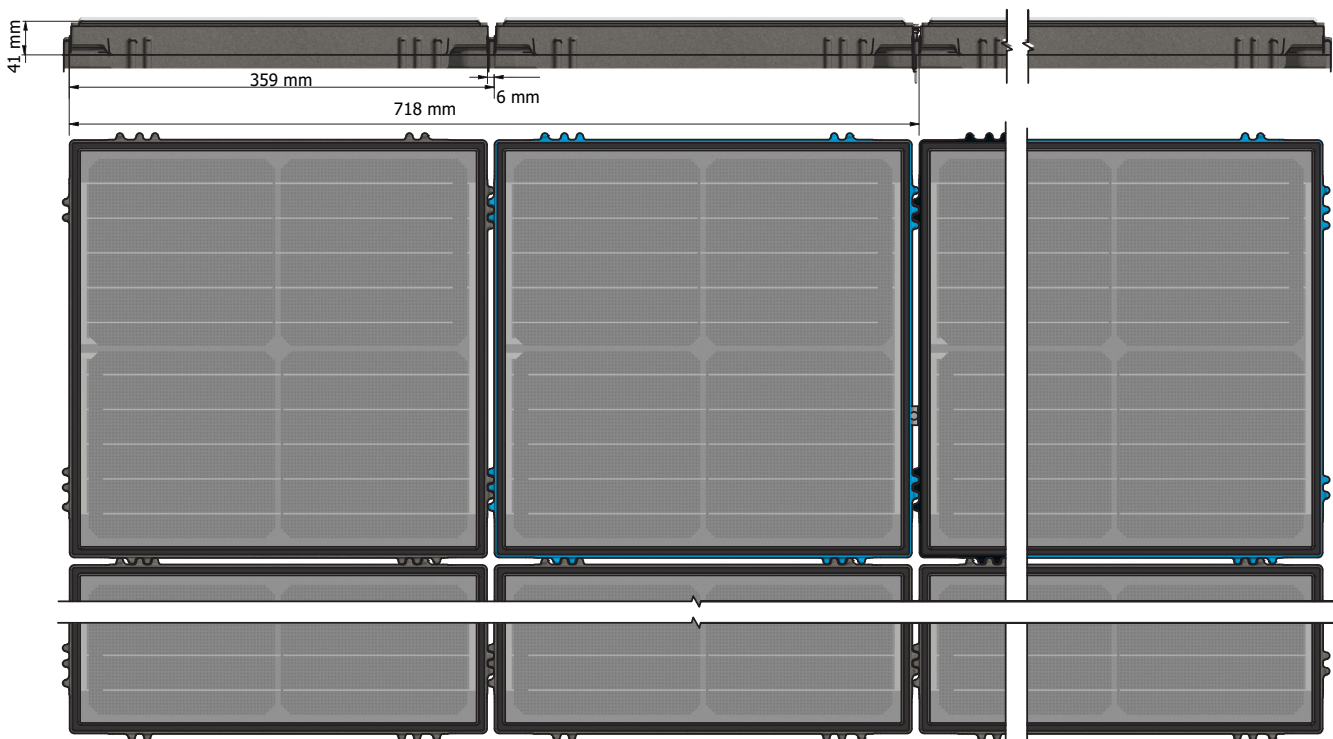
■ technical drawings



## PRODUCT TECHNICAL DRAWING



## SYSTEM LAYOUT



© PLATIO. All rights reserved.

Specifications included in this datasheet are subject to change without notice.

Version 2023/1